

WELCOME HOME
to Champlain Shores

BECKWITH



Champlain Shores is a community built for those ready to embrace life by the water. Just 45 minutes north of Barrie in the small town of Penetanguishene, it's a place where you can find both vibrant energy and quiet relaxation. With scenic trails, Georgian Bay at your doorstep, and dockage for easy access to explore by water, Champlain Shores offers the best of outdoor living alongside all the essentials—local shops, healthcare, schools, and year-round adventure from skiing to snowmobiling.

Whether you're taking in endless sunsets, setting off on scenic trails, or enjoying waterfront views, this is where your next chapter begins.

WELCOME HOME
to Endless Sunsets





BECKWITH

WITHOUT ADDITIONAL SPACE OVER GARAGE

Side Elevation



Front Elevation



Side Elevation



Back Elevation



BECKWITH

WITH OPTIONAL SPACE OVER GARAGE

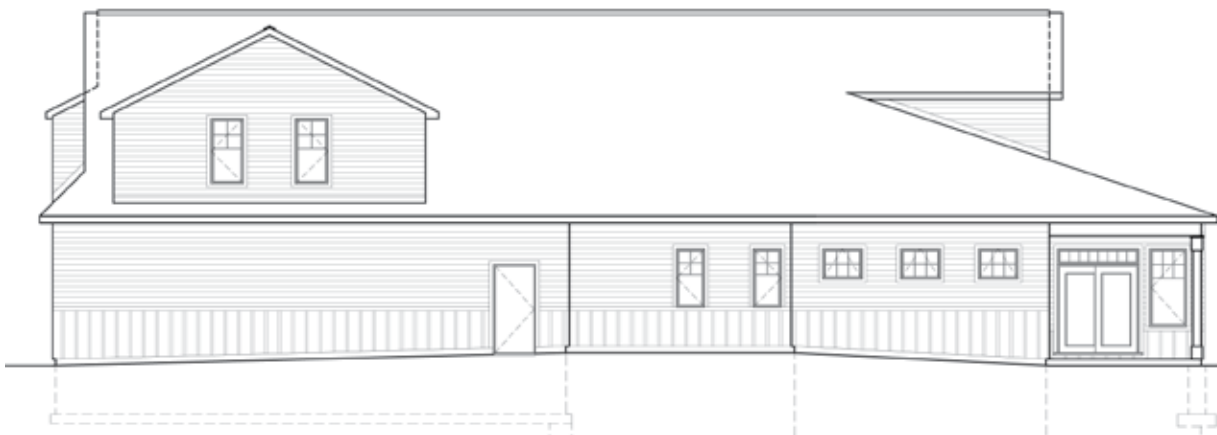
Side Elevation



Front Elevation



Side Elevation



Back Elevation



Note: "Plans, Dimensions And Specifications Are Approximate And Subject To Change Without Notice. Furniture Is For Illustrative Purposed Only And Is Not Included. Illustrations And Photographs May Be Upgraded Features And/Or Artist's Conception. E&O.e."

QUICK FACTS



3-5 Beds



3-4 Bath



±2,168 sq. ft.



3 Garage

Ground Floor



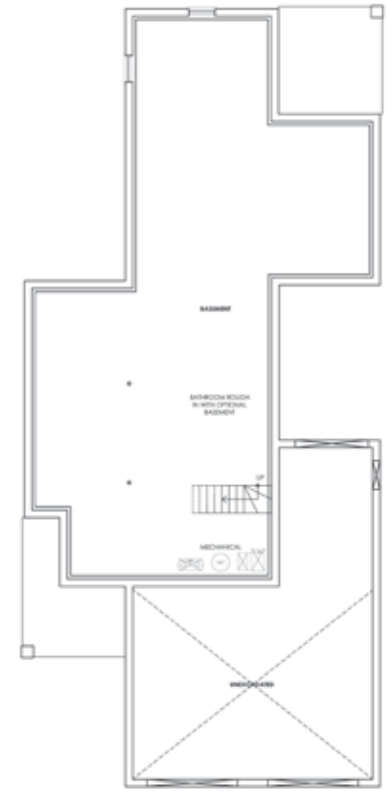
TOTAL AREA: ± 1,753 sq.ft
GARAGE: ± 856 sq.ft
PORCH ± 228 sq.ft

Second Floor



TOTAL AREA: ± 715 sq.ft
OPT. SUITE: ± 607 sq.ft

Crawl Space Standard (Basement optional where allowed)



TOTAL AREA: ± 1,753 sq.ft

Note: "Plans, Dimensions And Specifications Are Approximate And Subject To Change Without Notice. Furniture Is For Illustrative Purposed Only And Is Not Included. Illustrations And Photographs May Be Upgraded Features And/Or Artist's Conception. E&O.e."



CHAMPLAIN *Shores*

DISCOVER MORE ONLINE

