

WELCOME HOME
to Champlain Shores

TOWNHOMES
END UNIT



3-4 Beds



3 Bath



±1,907 sq. ft.



1 Garage

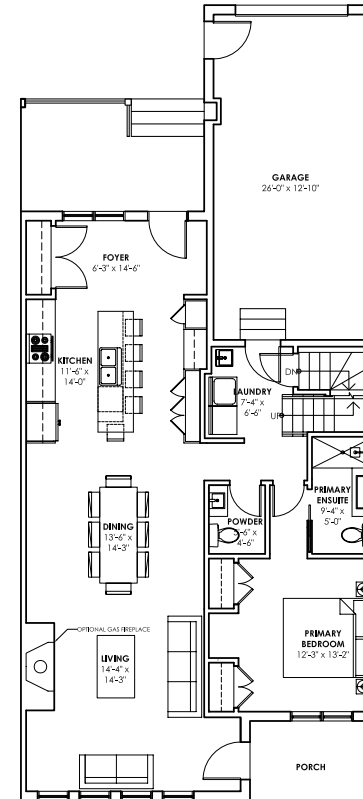
MAIN FLOOR

Champlain Shores is a community built for those ready to embrace life by the water. Just 45 minutes north of Barrie in the small town of Penetanguishene, it's a place where you can find both vibrant energy and quiet relaxation. With scenic trails, Georgian Bay at your doorstep, and dockage for easy access to explore by water, Champlain Shores offers the best of outdoor living alongside all the essentials—local shops, healthcare, schools, and year-round adventure from skiing to snowmobiling.

Whether you're taking in endless sunsets, setting off on scenic trails, or enjoying waterfront views, this is where your next chapter begins.

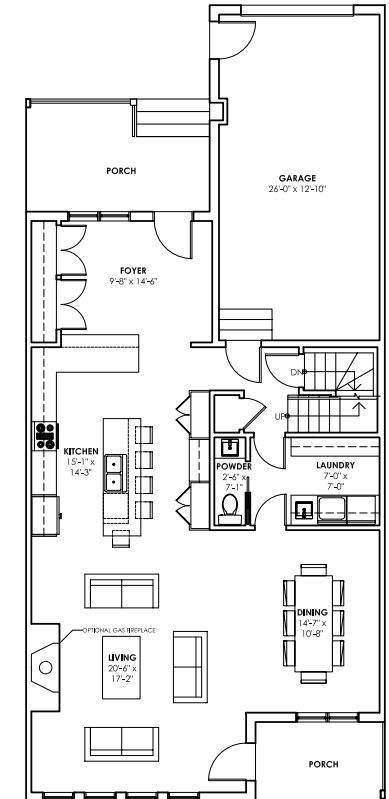


A Main Floor
with primary bedroom



TOTAL AREA: ± 1,118 sq.ft
GARAGE: ± 371 sq.ft

B Main Floor
Open plan

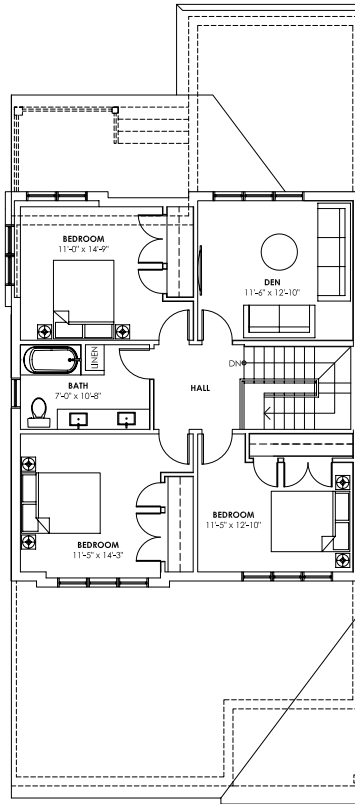


TOTAL AREA: ± 1,118 sq.ft
GARAGE: ± 371 sq.ft

SECOND FLOOR

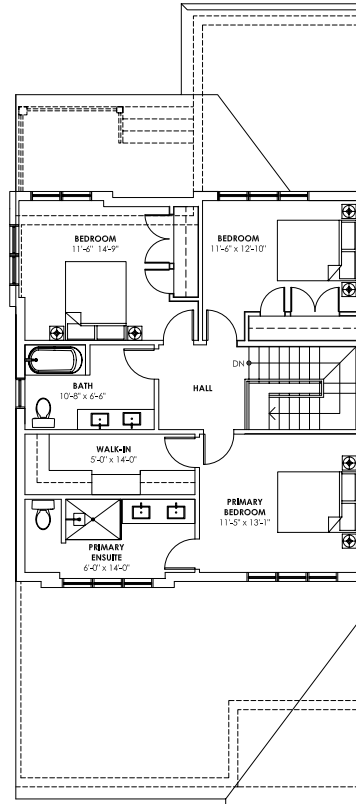
BASEMENT

A Second Floor with 3 Bedrooms



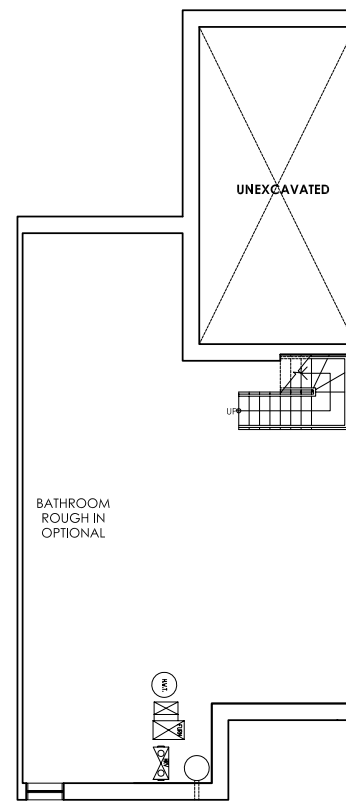
TOTAL AREA: ± 789 sq.ft

B Second Floor with home office



TOTAL AREA: ± 789 sq.ft

A Basement Unfinished



TOTAL AREA: ± 963 sq.ft

NOTE: "PLANS, DIMENSIONS AND SPECIFICATIONS ARE APPROXIMATE AND SUBJECT TO CHANGE WITHOUT NOTICE. FURNITURE IS FOR ILLUSTRATIVE PURPOSES ONLY AND IS NOT INCLUDED. ILLUSTRATIONS AND PHOTOGRAPHS MAY BE UPGRADED FEATURES AND/OR ARTIST'S CONCEPTION. E&O.E."



CHAMPLAIN *Shores*

DISCOVER MORE ONLINE

