

**WELCOME HOME**  
*to Champlain Shores*

**TOWNHOMES**  
INTERIOR UNIT



**3-4 Beds**



**3 Bath**



**±1,932 sq. ft.**



**1 Garage**

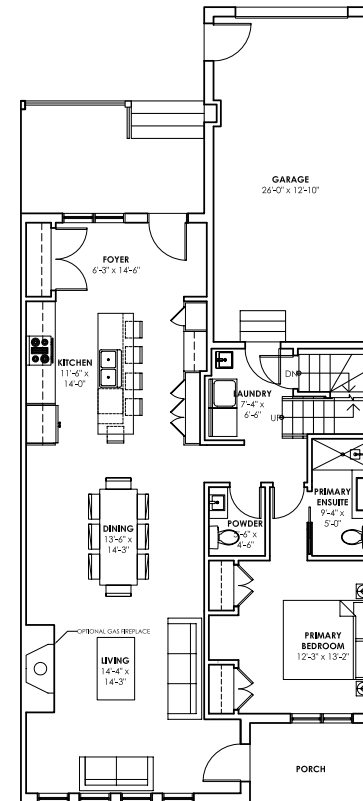
Champlain Shores is a community built for those ready to embrace life by the water. Just 45 minutes north of Barrie in the small town of Penetanguishene, it's a place where you can find both vibrant energy and quiet relaxation. With scenic trails, Georgian Bay at your doorstep, and dockage for easy access to explore by water, Champlain Shores offers the best of outdoor living alongside all the essentials—local shops, healthcare, schools, and year-round adventure from skiing to snowmobiling.

Whether you're taking in endless sunsets, setting off on scenic trails, or enjoying waterfront views, this is where your next chapter begins.



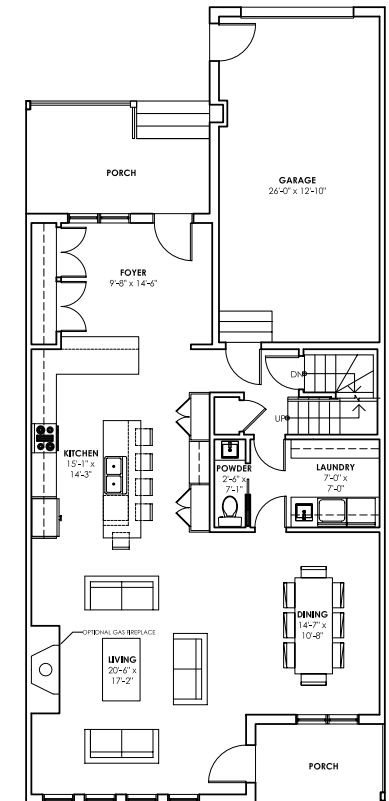
# MAIN FLOOR

**A** Main Floor  
with primary bedroom



**TOTAL AREA:** ± 1,143 sq.ft  
**GARAGE:** ± 374 sq.ft

**B** Main Floor  
Open plan

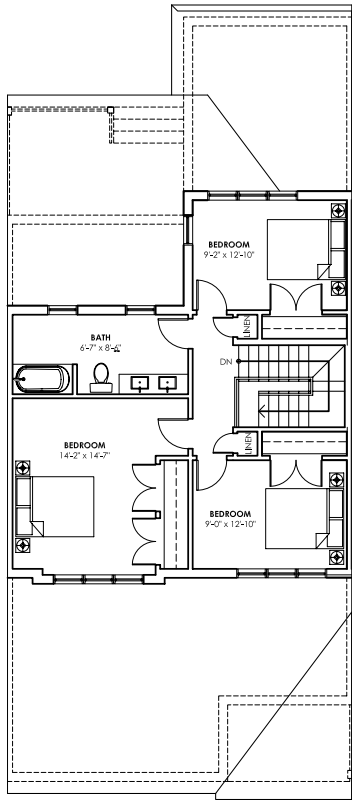


**TOTAL AREA:** ± 1,143 sq.ft  
**GARAGE:** ± 374 sq.ft

# SECOND FLOOR

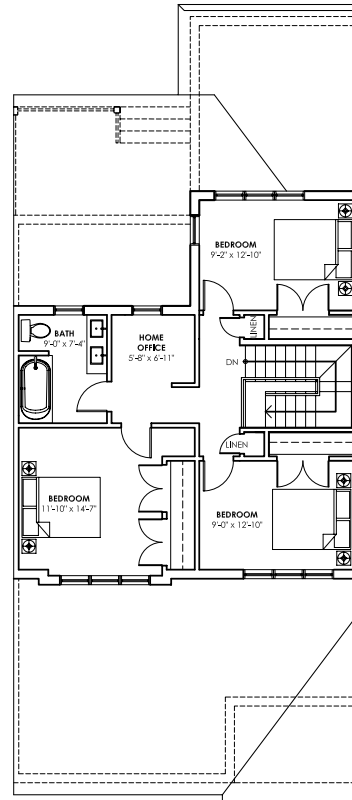
# BASEMENT

**A** Second Floor  
with 3 Bedrooms



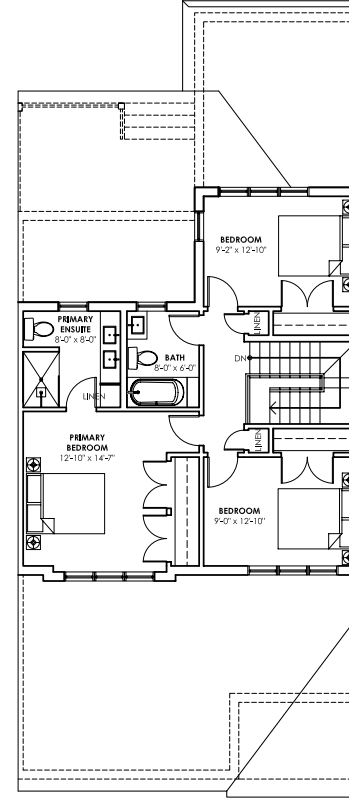
**TOTAL AREA:** ± 789 sq.ft

**B** Second Floor  
with home office



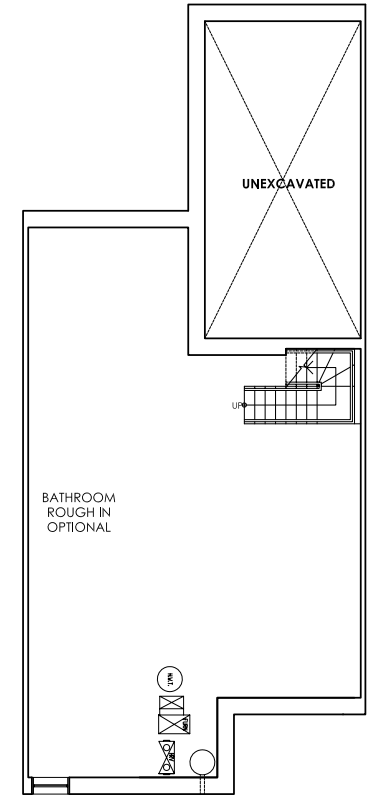
**TOTAL AREA:** ± 789 sq.ft

**C** Second Floor  
with primary bedroom



**TOTAL AREA:** ± 789 sq.ft

**A** Basement  
Unfinished



**TOTAL AREA:** ± 963 sq.ft

NOTE: "PLANS, DIMENSIONS AND SPECIFICATIONS ARE APPROXIMATE AND SUBJECT TO CHANGE WITHOUT NOTICE. FURNITURE IS FOR ILLUSTRATIVE PURPOSES ONLY AND IS NOT INCLUDED. ILLUSTRATIONS AND PHOTOGRAPHS MAY BE UPGRADED FEATURES AND/OR ARTIST'S CONCEPTION. E&O.E."

# CHAMPLAIN *Shores*

DISCOVER MORE ONLINE

